

SOUTHERN PLAINS NEWSLETTER

February 2012

Fort Sill, OK

One Company. One Mission. Families First.®



From the Desk of Darin Utterback

Community Management Director

Dear Families,

In the middle of these wintry days, it's hard to believe spring will be here soon and so will the landscaping crews beginning the full-mow weeks of the 2012 landscaping program. During the month of February, the landscaping crews will be making their way through the neighborhoods cleaning up the debris of winter and vacuuming leaves.

Trees are being trimmed while the grass is dormant. Our annual pruning helps many of the trees and shrubs by ridding them of dead and diseased limbs and branches, which encourages new growth. Much of the backyard shrubbery will receive pruning during the early part of spring. Sometimes a shrub will receive a drastic cut -- down to just a few inches -- to allow the plant to

develop a fresh new top without suckers and tangled growth.

Please remember your trash collection has changed. Trash and recyclables are picked up weekly on Mondays only. Any changes in the collection schedule will be listed on the calendar posted each month on the back page of your monthly newsletter.

As you begin to look ahead, be sure to check out our calendar of events in coming months. We will be hosting a variety of fun, family-friendly events and activities throughout the year including the annual Easter Egg Hunt and photos with the Easter Bunny in April and our annual Family Carnival. We hope that you will join us for these exciting events.

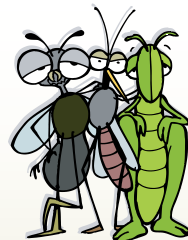
Pest Control

Picerne Military Housing offers quarterly, preventative pest control treatment around the exterior of each home. Please be advised to unlock any gates and bring pets indoors on the scheduled treatment day to ensure that your home is sprayed in its entirety.

All chemicals used are organic, odorless and will not stain. Please refrain from watering the grass and flower bed areas for one hour after application for maximum effectiveness.

Environmental Pest and Termite Control of Lawton will conduct the preventative treatment as scheduled below, weather permitting. Please contact your Neighborhood Office with any questions.

February 3 - Artillery Village
February 10 - Henry Post Manor
February 17 - Patriot Estates



NEIGHBORHOOD OFFICE

Manager

Robin Levine

Maintenance Supervisor

Rob Smith

Hours of Operation

M – F 8:00 a.m. to 6:00 p.m.

SAT 10:00 a.m. to 5:00 p.m.

Address

5434 Rossbach Rd

Phone

580-581-2142

Fax

580-581-2143

Website

www.sillpicerne.com

E-Mail

southernplains@picernemh.com

Safety Watch

Construction site safety for children.

At Picerne Military Housing, your child's safety is our number one concern. Please explain to your children the dangers associated with playing in or around a construction site. We ensure that our construction sites are cleaned on a daily basis and that existing homes under construction are locked nightly.



In addition, all Picerne Military Housing employees and sub-contractors have received an initial safety orientation highlighting the importance of eliminating hazards to children and families and have posted signs in the windows of homes that are currently undergoing renovation. Thank you for your help in keeping all of our children safe and away from construction, site development and renovations.

Keep area around electrical panels clear

Please remember to maintain a clear space around all electrical panels. Keep storage at least 36 inches away and do not store anything on top of electrical panels. Electrical panels should remain accessible at all times

Green Corner



Heating Tip: Use a rolled up blanket or towel to block cold drafts from leaking into the house at the base of your door.

Then submit a work order to your Neighborhood Office to apply weather stripping to the area.

Dishwasher Tip: Use short wash cycles for everything but the dirtiest dishes. The short cycles use less energy and work just as well.

Trash picked up weekly on Mondays

Please remember household trash will be collected once a week throughout Fort Sill's family housing neighborhoods. Trash will be collected curbside each week on Mondays with recycling unless otherwise noted on the calendar on the back of your monthly newsletter.

Each family has been provided one residential trash container and two recycling totes which should be adequate for families living on post. Recycling is strongly encouraged. Ton for ton, recycling reduces more pollution, saves more energy and reduces greenhouse gas emissions more than any other activity besides source reduction.

To ensure proper pick-up of your trash container, please remember all residential containers will be emptied on their scheduled collection day, each Monday. Please follow these guidelines to accommodate the automated trucks:

- Place your residential rollout curbside by 6:30 a.m. each Monday.
- Make sure the wheels are facing away from the street and toward your residence. The arrows on the lid should point toward the street.
- Place the rollout within four feet of the curb.
- Place the rollout at least four feet away from all objects such as posts, gas meters, mailboxes, other carts or recycling bins.
- Do not place the following materials or items in rollouts: rock, dirt, gravel, cement, batteries, liquid paint, or tires.
- All garbage must be placed inside the roll-out.
- Bag all of your garbage to keep it from blowing away on windy days while dumping.

Through the recycling program, families can help protect the environment. Place recycling bins curbside on Mondays, four feet away from all other objects such as your rollout. Fort Sill's residential recycling program includes four items only:

- Plastic Bottles
- Aluminum and Steel Cans
- Paper
- Cardboard boxes



Flatten cardboard boxes and place them next to your recycling bins. Cardboard must be corrugated boxes only. Remove any waxed or plastic liners and flatten. DO NOT include cardboard contaminated with food or grease, wax coated, glossy or coated cardboard or boxboard such as cereal boxes, beer boxes or shoe boxes. Use one bin for aluminum and steel cans only. Use one bin for paper only. Paper includes brochures, flyers, scratch paper, books, computer paper, catalogs and magazines. DO NOT include carbon paper, waxed paper, and wet/contaminated paper. Bag all plastic bottles and jugs in a plastic bag. Place plastic bags of plastic bottles and jugs on top of recycling bins. Please rinse out all aluminum cans and plastic bottles to remove contaminants such as milk which prevent recycling. Co-mingled items (items mixed together in the same bin) will be considered trash and trash cannot be recycled.

Bulk trash will continue to be picked up Monday and Thursday each week. Bulk items include furniture or other large items that do not fit in your trash container. Household trash will not be picked up by the bulk service. Please also remember to bring your trash container and recycling totes back from the curb after pickup to keep roadways clear.

SOS and FRP host Military Saves Week training

Survivor Outreach Services and the Financial Readiness Program are partnering together February 22-23 for the Military Saves Week. The campaign is an effort to combat the mounting personal debt of so many individuals. The Military Saves campaign is a Department of Defense financial readiness campaign to persuade military service members, family members and the wider military community to reduce debt and save money, thereby ensuring personal wealth and stability and positively impacting the nation's personal/household savings rates.

Family Member Employment Readiness Resume Class offered

The Family Member Employment Readiness Program offers a Resume Class, February 15 from 9:30 to 11 a.m. in Building 2871. Attendees will learn which resume type to use including chronological, functional, combined or targeted. This class gives attendees all the information they need on their resume to get that job. To register, call 442-2039 or email gerda.weekley@us.army.mil.

Preventing Frozen Pipes

Before the onset of cold weather, prevent freezing of these water supply lines and pipes by following these recommendations:

- Remove, drain and store hoses used outdoors.
- Close inside valves supplying outdoor faucets. Then, open the outside faucet to allow water to drain. Keep the outside valve open so that any water remaining in the pipe can expand without causing the pipe to break.
- Check around the home for other areas where water supply lines are located and are in unheated areas. Look in the basement, crawl space, attic, garage and under kitchen and bathroom cabinets. Both hot and cold water pipes in these areas should be insulated. A hot water supply line can freeze just as a cold water supply line can freeze if the water is not running through the pipe and the water temperature in the pipe is cold.
- Call your Neighborhood Office if you have pipes that need to be insulated.



During Cold Weather, Take Preventive Action

- Keep garage doors closed if there are water supply lines in the garage.
- Open kitchen and bathroom cabinet doors to allow warmer air to circulate around the plumbing. Be sure to move any harmful cleaners and household chemicals up out of the reach of children.
- When the weather is very cold outside, let the cold water drip from the faucet served by exposed pipes. Running water through the pipe—even at a trickle—helps prevent pipes from freezing because the temperature of the water running through it is above freezing.
- Keep the thermostat set to the same temperature both during the day and at night.
- If you will be going away during cold weather, leave the heat on in your home, set to a temperature no lower than 55°F.

For more information, please contact your Neighborhood Office.

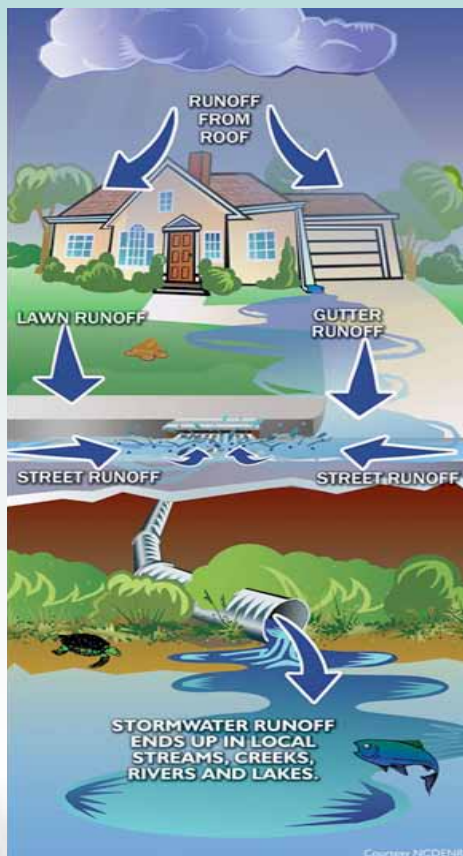
Visit www.sillpicerne.com today!

Visit our website to submit a work order 24 hours a day, 7 days a week. View our on-line bulletin board for up-to-date information on events and holiday service schedules. You can also view your monthly newsletter.

Why is stormwater runoff a problem?

Polluted stormwater runoff can have many adverse effects on plants, fish, animals, and people.

- Sediment can cloud the water and make it difficult or impossible for aquatic plants to grow.
- Sediment also can destroy aquatic habitats.
- Bacteria and other pathogens can wash into swimming areas and create health hazards, often making beach closures necessary.
- Debris—plastic bags, six-pack rings, bottles, and cigarette butts—washed into waterbodies can choke, suffocate, or disable aquatic life like ducks, fish, turtles, and birds.
- Household hazardous wastes like insecticides, pesticides, paint, solvents, used motor oil, and other auto fluids can poison aquatic life. Land animals and people can become sick or die from eating diseased fish and shellfish or ingesting polluted water.



Be a responsible pet owner

While families and pets will begin to spend more time outdoors, pets and their people need to be mindful of both the post and neighborhood pet regulations. Pets are a wonderful addition to any family, but responsibility comes with having them. Please remember...

- All pets must be registered with the Vet Clinic.
- All pets must be current on all vaccinations.
- All pets must be on a leash while outside the home or held within a fenced yard with a secure gate.
- Pets are the responsibility of their owners. Owners are liable for all damages and injuries that may occur.
- Fort Sill has a mandatory "poop and scoop" policy. When walking your pet, please clean up after him/her.



Use the Fort Sill Auto Craft Shop for auto repairs

Please remember, automobile repairs are not authorized in the Fort Sill Housing Area. Residents may use the Fort Sill Auto Craft Shop owned by DMWR for repairs. A resident or visitor vehicle may be towed and impounded without prior notice, at vehicle owner's expense, if it is inoperable, otherwise disabled or parked in a space assigned to another resident.



Army Family Team Building Level 1 offered



Army Family Team Building Level 1 is February 8-9 at the AFTB Training Center, Building 2719. The course runs from 9 a.m. – 3 p.m. Learn about the Army life and how to maneuver through daily challenges by discovering how to decipher Army acronyms, utilize community resources, attain better financial readiness and understand the goal and impact of the Army mission. Call 442-2382 or email tammy.c.walton@us.army.mil to register.

Youth Center takes bus to see OK Sooners basketball

Youth Center members can watch the Big 12 Oklahoma Sooners men play basketball on February 4 for only \$15. Only a permission slip and money will hold your spot. Only 28 spots are available. The bus leaves from the center at 2:30 p.m. The game starts at 5 p.m. Game times are subject to change, and the new time will be posted if it changes from 5 p.m. Call 442-6745 for more information.



Our Family for Families First scholarship and grant applications available

Our Family for Families First, John G. Picerne's private charitable foundation, was established to support the educational goals of children and spouses of active-duty Service Members. College scholarships in the amount of up to \$50,000 for the children of active-duty Service Members and educational grants in the amount of \$5,000 are available each year for spouses of active-duty Service Members stationed at Aberdeen Proving Ground, Fort Polk, Fort Bragg, Fort Meade, Fort Rucker, Fort Riley and Fort Sill. Scholarship and grant applications for 2012 are available online at www.ourfamilyfoundation.org. Scholarship applications are due February 16, 2012 and grant applications are due May 17, 2012. Please review the information located on the web site for eligibility requirements and to learn more about the Our Family for Families First Foundation.

The Foundation is committed to supporting military families in the pursuit of higher education, instituting a tradition of community service and encouraging professional career paths through education, internships, and mentoring programs and has awarded more than \$3 million since 2006. It also serves to further the primary mission of Picerne Military Housing – putting military Families First™.

FEBRUARY

SUNDAY	MONDAY	TUESDAY	WEDNESDAY	THURSDAY	FRIDAY	SATURDAY
				<i>Ground Hog Day</i> Bulk Trash	<i>Pest Control</i> <i>Artillery Village</i> Lawn Weather Make up	
			1	2	3	4
<i>Super Bowl XLV</i>	<i>Trash/Recycling</i> <i>Bulk Trash</i>		<i>Conifer & Tree Pruning</i> <i>Geronimo Acres:</i> <i>Honeycutt, Rutledge, Peden</i>	<i>Bulk Trash</i> <i>Conifer & Tree Pruning</i> <i>Geronimo Acres:</i> <i>Faiola, Kinzel</i>	<i>Pest Control</i> <i>Henry Post Manor</i> <i>Conifer & Tree Pruning</i> <i>Geronimo Acres:</i> <i>Rosbach, Kaiser</i>	
5	6	7	8	9	10	11
	<i>Trash/Recycling</i> <i>Bulk Trash</i> <i>Conifer & Tree Pruning</i> <i>Geronimo Acres:</i> <i>Havron, Hamell</i>	<i>Valentine's Day</i> <i>Conifer & Tree Pruning</i> <i>Geronimo Acres:</i> <i>Follett, Wolff</i>	<i>Conifer & Tree Pruning</i> <i>Henry Post Manor</i> <i>Artillery Village</i>	<i>Scholarship Applications Due</i> <i>Bulk Trash</i> <i>Conifer & Tree Pruning</i> <i>Patriot Estates</i>	<i>Pest Control</i> <i>Patriot Estates</i> Lawn Weather Make up	
	12	13	14	15	16	17
	<i>Presidents' Day</i> <i>Trash/Recycling</i> <i>Bulk Trash</i>				<i>Bulk Trash</i>	<i>Lawn Weather Make up</i>
	19	20	21	22	23	24
	<i>Trash/Recycling</i> <i>Bulk Trash</i>				<i>March</i> <i>Bulk Trash</i>	<i>Conifer & Tree Pruning</i> <i>Quannah Parker Square</i> <i>Craig Crossing</i>
	26	27	28	29	1	2
	<i>Trash/Recycling</i> <i>Bulk Trash</i>	<i>Spring Clean Up</i> <i>Geronimo Acres:</i> <i>Havron, Hammel, Follett, Wolff</i>	<i>Spring Clean Up</i> <i>Patriot Estates: All streets south of and including Greble Rd</i>	<i>Bulk Trash</i> <i>Spring Clean Up</i> <i>Patriot Estates: All streets north of Greble Rd</i>	<i>Lawn Weather Make up</i>	
4	5	6	7	8	9	10
	<i>Spring Clean Up</i> <i>Geronimo Acres:</i> <i>Faiola, Kinzel, Rosbach, Kaiser</i>					



Place trash rollout and bulk trash curbside by 6:30 a.m.